

info@logs.net
800-600-5647
Colorado Springs, CO



Summer 2010
800-600-5647
www.logs.net



Cedar...the best wood around your log home

"Cedar costs more than pine."

Of the many stories we hear while discussing log homes with clients, this comment has to rank near the top.

The cost of Cedar vs. pine varies from company to company. A typical 2000 sq ft Cedar log home, when completed, should cost only \$7,000-7,200 more than a comparable pine log home. A small difference in price for a big difference in quality.

All things considered, Cedar is the least expensive wood species for your log home.

Cedar twists and warps far less than common whitewoods. It also shrinks and settles less. Cedar has less future maintenance, saving cost now and in the future.

Less future maintenance with Cedar is due in part to Cedar's natural resistance to insects, rot, and decay. There is no need to treat and re-treat your home with insecticides and other chemicals.

Cedar has fifty percent better insulation than whitewoods (pine, spruce, etc). This results in lower utility costs.

Cedar's lighter weight allows for easier handling and faster build time. And, with it's lighter weight, shipping is on one truck rather than two, which cuts freight in half.

If anyone tells you that whitewoods are just as good as Cedar, then ask what they recommend for use as roof fascia. If the answer is Cedar (which is the best choice due to weather resistance), then you might have "your final answer".

For more information about Cedar, check out our website at www.logs.net or better yet, check for yourself by searching the web for "incense cedar".

Cedar - nature's best

100% renewable resource

1 1/2 times the insulation of pine

Lighter weight - faster build time

Less checking, cracking and settling

Resistant to insects - no chemicals

Less log movement - no adjustments



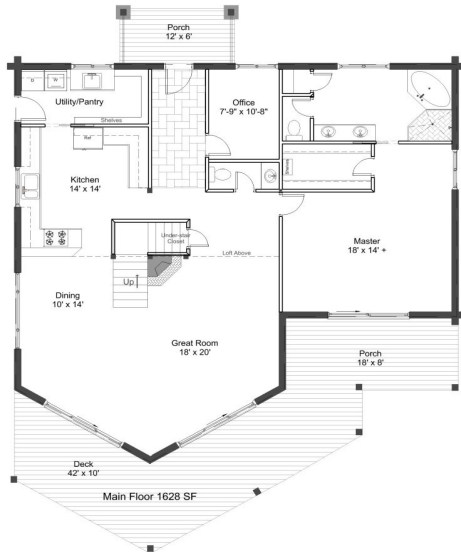
Murphy, NC, log home pictures

Check out the latest at
www.logs.net
or call 800-600-5647

So you think a "prow front" is just the thing?

Here's a design from one of our CAD designers. He's come up with a plan that just might "fill the bill". It's a rear entry plan with great view appeal.

"To see or to be seen, that is the question." Either way, this plan has something for you.



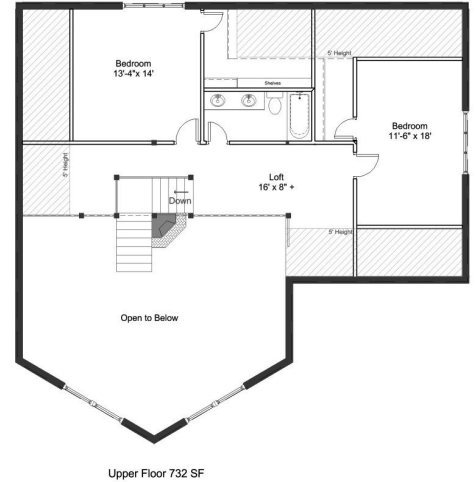
And the best part - with Cedar LogSystems you can actually have a log prow front that is air-tight. You see, a lot of log home companies will sell you a prow front design but it won't be log, it'll be log siding. What's the difference you ask? Try the words "differential settling" for starters.

Most other log companies just build the angles using the old stand-by "if you can't do it in log, frame it, and side it," and then the horizontal logs move and the vertical framed walls don't - oops!

Cedar LogSystems (ever wonder why we use that word, LogSystems, instead of log supply? keep reading) took the time to figure out the "what and wherefore" of a log prow front.

Once again our CAD designer comes into play. I told him if we couldn't figure out how to make a true, full log corner air-tight corner, we wouldn't have a prow.

Turns out he can figure out anything us-



ing CAD and a bit of "Aggie ingenuity"! So if you're thinking a log prow front is a "must have," then your search for the perfect log home system is over.

If the plan shown isn't exactly right for you, we'll be more than happy to visit your site, chat a while, then start that sketch "Your log home - Your way".

The outside story ... is best told from the inside

Cedar LogSystems is frequently asked, "Do you assemble the log home shell and then disassemble it before you ship it?"

Unlike other log home companies that need to pre-fit their logs, Cedar LogSystems uses a computer generated "log layout and cut sheet". (See the illustration at right for an example.)

Cedar LogSystems saves you substantial cost by not having to embed additional labor into your package for pre-stack, un-stack and re-stack. You have one labor on your site vs. three separate labor costs with other log companies.

With precision pre-cut logs you also save over the labor cost of having the logs cut on-site and the potential of on-site cut errors and waste. Our plant personnel optimize the yield of every log to maximize use and minimize waste, saving both material cost and excess jobsite labor.

Please note that the layouts shown are for upper walls. Cedar LogSystems believes that a log home should be log on both the main and upper floors. In addition, your home builds faster and is better insulated when you have log walls on both levels.

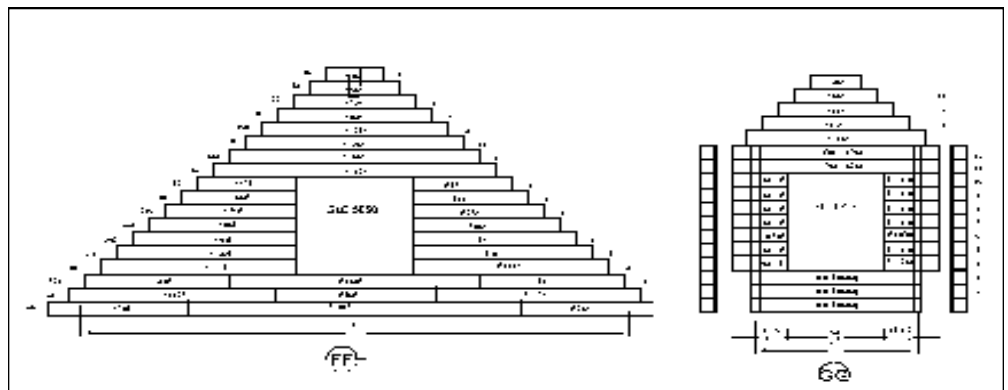
When you're ready to design and build your dream log home, trust the team at Cedar LogSystems.

You'll get precision pre-cut full logs delivered to your site and then assembled on your foundation.

"Your log home - Your way."

That's the way we do business at Cedar LogSystems.

Let's visit about your log home design. Share your ideas and thoughts. We're here seven days a week to help.



Example of log layout for gable and dormer (blurred to avoid misuse)

We want a one-story - with a daylight basement

A one-story log home... on a basement?
Isn't that an oxymoron?

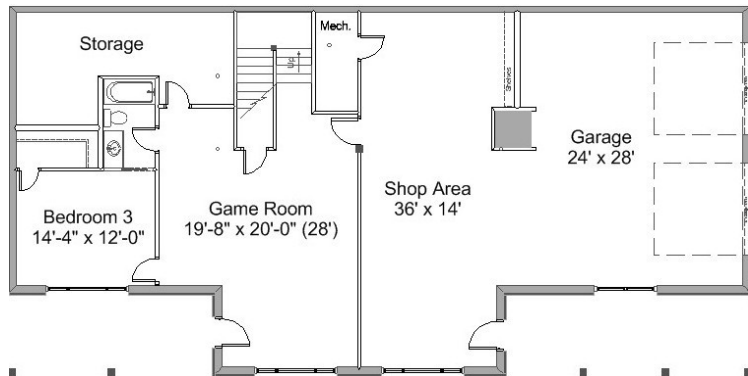
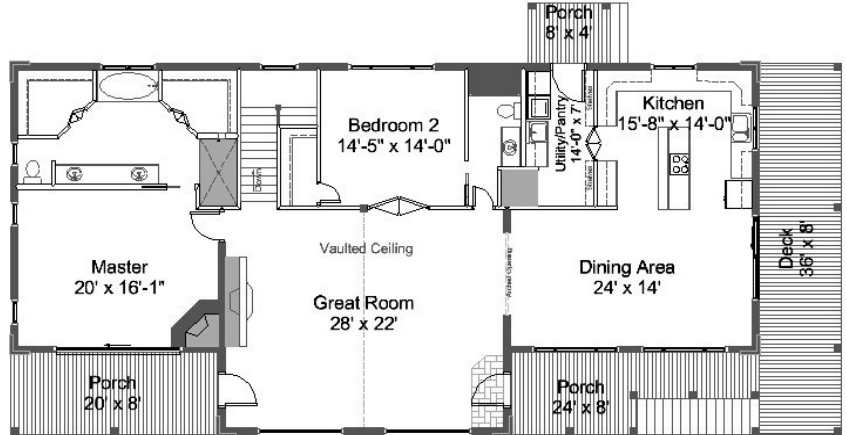
Anyway, we visited the clients' site (in this case in Colorado - we're delighted to travel throughout the USA) and here's how a plan developed after some chatting and sketching.

#1. Magnificent views - the rooms where you live, eat, play and work have lots of windows. #2. Large master and guest room on main - no hallways provide easy access for everyone. Notice the double sinks, double closets, and oversized shower in the master bath, and the double entrances to the guest bath.

#3. These clients may leave the basement unfinished and work on that later as a family project. This "now and later" idea may make it a "maybe-someday to now-day" log home!

As you can see from the plan there is a lot of "later" potential: an additional bedroom and a game room /TV/ theater area, plus there's still storage area.

*And note that the lower level has a large garage/shop area (it's actually half the lower level). It's what several women have called "the man cave." Call it what you will, it's available to use right away. What a great space this is to get "the other half" away from it all!



On-Site Visits

(and why they're so important)

Cedar LogSystems believes that in order to help you develop the best log home plan for your lifestyle and your land, we need to "see what you see". In other words, how can we help you realize your dreams if we don't know what your dreams are?

Taking the time to visit your land, looking, listening, and sitting down to design for your lifestyle is just one of the many "extras" that is standard when you allow Cedar LogSystems to help you design "Your log home - Your way".

Let's schedule your personal design consultation.



South Fork, Colorado

CEDAR LOG SYSTEMS

PO Box 25250
 Colorado Springs, CO
 80936-5250

Food for Thought!

Direct comments to 719.235.8242

"Restoring Honor"
 Lincoln Memorial
 August 28, 2010

Our Republic is at risk.

We believe this may be one of the most important gatherings of support for the rights of "We, the People".

Join us... and fellow American Patriots standing for our Constitution.

Patti and I will attend this historic event. Please join us.

Cedar Log Homes - Custom Design - Custom Build - Nationwide



Heating Cost Comparisons

When our clients ask about heating systems for their new log home, we recommend electric. It's less expensive than propane and is easier to plan for and work with. See the chart below.

Est. Change in Home Heating Costs (2005 - 2009)

Year	Heating Oil	Natural Gas	Propane	Electric
2005	\$1,198	\$743	\$1,102	\$717
2006	\$1,430	\$945	\$1,281	\$782
2007	\$1,468	\$813	\$1,349	\$823
2008	\$1,962	\$858	\$1,670	\$842
2009	\$2,593	\$978	\$1,967	\$875

Source: Energy Information Administration

This is important enough to repeat (again & again)

The \$7,000 Advantage!

After hearing stories of Cedar costing 25 to 40% more, let's set matters straight.

A Cedar log home is obviously better. Why else would the other log companies charge a premium for Cedar?

The issue is how much more. And the answer will surprise you.

For an average sized log home (1932 sq ft Enchanted Forest) you would need 14,070 BF of 8" logs (board footage is the wood volume measurement) for the package.

At \$500/MBF more for Cedar (actual mill cost difference), Cedar is \$7,035 more, or about 2-2.5% of your total log home cost. Money well spent!

CEDAR is the \$7000 Advantage!

Military, Police, Firefighters, American Patriots!

If you've visited our Cedar LogSystems booth a log home show, you've seen our log home displays that feature special offers for military, police, firefighters, life NRA members and fellow American Patriots.

It's our way of saying thank you for what you do. Maybe you'd like Aspen in your great room ceiling, or you'd like Cedar decking for your porch and deck. We may just add that Aspen or Cedar decking free of charge. What's in the bonus package depends on the size and configuration of your log home plan.

We salute you and all you do to protect this great country of ours. And the bonus product we ship with your new log home is our way of saying "job well done". Thanks to all who serve and to their families.